

हमारा विश्वास... हर एक विद्यार्थी है खास



JEE  
MAIN  
JAN'19

**QUESTION WITH SOLUTION**

DATE : 11-01-2019 \_ EVENING

**IIT  
NIT**  
XI, XII & XII Pass

**AIMS  
NEET**  
XI, XII & XII Pass

**BOARDS  
NTSE  
OLYMPIADS**  
V to X Class

RESIDENTIAL  
COACHING PROGRAM  
**rona**  
Discipline-Bridge between dreams & Success

**20000+**  
SELECTIONS SINCE 2007

JEE (Advanced)

**4626**

(Under 50000 Rank)

JEE (Main)

**13953**

NEET / AIIMS NTSE / OLYMPIADS

**662**

(since 2016)

**1066**

(5th to 10th class)

Toll Free :  
**1800-212-1799**

**MOTION™**

Nurturing potential through education

H.O. : 394, Rajeev Gandhi Nagar, Kota  
www.motion.ac.in | ✉: info@motion.ac.in

# [CHEMISTRY]

1. The hydride that is NOT electron deficient is :  
 (A)  $\text{AlH}_3$                       (B)  $\text{GaH}_3$                       (C)  $\text{SiH}_4$                       (D)  $\text{B}_2\text{H}_6$

**Sol. C**  
 (1)  $\text{B}_2\text{H}_6$  : Electron deficient  
 (2)  $\text{AlH}_3$  : Electron deficient  
 (3)  $\text{SiH}_4$  : Electron precise  
 (4)  $\text{GaH}_3$  : Electron deficient

2. The reaction,  
 $\text{MgO(s)} + \text{C(s)} \rightarrow \text{Mg(s)} + \text{CO(g)}$ , for which  $\Delta_r H^\circ = +491.1 \text{ kJ mol}^{-1}$  and  $\Delta_r S^\circ = 198.0 \text{ JK}^{-1} \text{ mol}^{-1}$ , is not feasible at 298 K. Temperature above which reaction will be feasible is :  
 (A) 1890.0 K                      (B) 2040.5 K                      (C) 2480.3 K                      (D) 2380.5 K

**Sol. C**

$$T_{\text{eq}} = \frac{\Delta H}{\Delta S}$$

$$= \frac{491.1 \times 1000}{198}$$

$$= 2480.3 \text{ K}$$

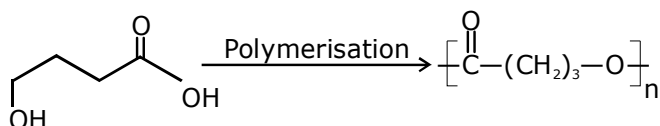
3. The higher concentration of which gas in air can cause stiffness of flower buds ?  
 (A)  $\text{SO}_2$                       (B)  $\text{NO}_2$                       (C)  $\text{CO}_2$                       (D) CO

**Sol. A**  
 Due to acid rain in plants high concentration of  $\text{SO}_2$  makes the flower buds stiff and makes them fall.

4. The homopolymer formed from 4-hydroxybutanoic acid is :



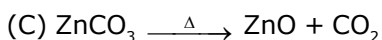
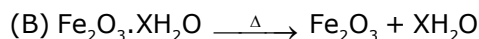
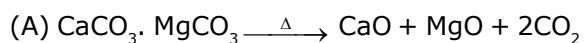
**Sol. A**  
 It is a formation of polyester



5. Taj Mahal is being slowly disfigured and discoloured. This is primarily due to :  
 (A) acid rain                      (B) global warming                      (C) soil pollution                      (D) water pollution

**Sol. A**  
 Taj mahal is slowly disfigured and discoloured due to acid rain.

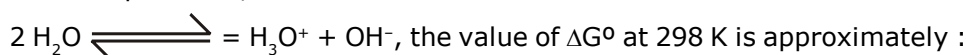
6. The reaction that does NOT define calcination is :



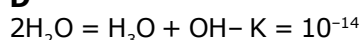
Sol. **D**

Calcination is carried out for carbonates and oxide ores in absence of oxygen. Roasting is carried out mainly for sulphide ores in presence of excess of oxygen.

7. For the equilibrium,



Sol. **D**



$\Delta G^\circ = RT \ln K$

$= \frac{-8.314}{1000} \times 298 \times \ln 10^{-14}$

$= 80 \text{ KJ/Mole}$

8. Among the colloids cheese (C), Milk (M) and smoke (S), the correct combination of the dispersed phase and dispersion medium, respectively is :

(A) C : solid in liquid; M : solid in liquid ;

S : solid in gas

(B) C : liquid in solid ; M : liquid in liquid ;

S : solid in gas

(C) C : liquid in solid ; M : liquid in solid ;

S : solid in gas

(D) C : solid in liquid ; M : liquid in liquid ;

S : gas in solid

Sol. **B**

	Dispersed Phase	Dispersion Medium
Cheese	Liquid	Solid
Milk	Liquid	Liquid
Smoke	Solid	Gas

9. The de Broglie wavelength ( $\lambda$ ) associated with a photoelectron varies with the frequency ( $\nu$ ) of the incident radiation as, [ $\nu_0$  is threshold frequency] :

(A)  $\lambda \propto \frac{1}{(\nu - \nu_0)^2}$

(B)  $\lambda \propto \frac{1}{(\nu - \nu_0)}$

(C)  $\lambda \propto \frac{1}{(\nu - \nu_0)^4}$

(D)  $\lambda \propto \frac{1}{(\nu - \nu_0)^{\frac{1}{2}}}$

Sol. **D**

For electron

$$\lambda_{DB} = \frac{h}{\sqrt{2mK.E.}} \text{ (de broglie wavelength)}$$

By photoelectric effect

$$h\nu = h\nu_0 + KE$$

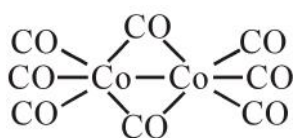
$$KE = h\nu - h\nu_0$$

$$\lambda_{DB} = \frac{h}{\sqrt{2m \times (h\nu - h\nu_0)}}$$

$$\lambda_{DB} \propto \frac{1}{(\nu - \nu_0)^{1/2}}$$

10. The number of bridging CO ligand(s) and Co—Co bond(s) in  $\text{Co}_2(\text{CO})_8$ , respectively are :  
 (A) 2 and 1                      (B) 0 and 2                      (C) 4 and 0                      (D) 2 and 0

Sol. A



Bridging CO are and Co - Co bond is 1.

11. Match the following items in column I with the corresponding items in column II

	<b>Column I</b>	<b>Column II</b>
(i)	$\text{Na}_2\text{CO}_3 \cdot 10\text{H}_2\text{O}$	(A) Portland cement ingredient
(ii)	$\text{Mg}(\text{HCO}_3)_2$	(B) Castner-Kellner process
(iii)	NaOH	(C) Solvay process
(iv)	$\text{Ca}_3\text{Al}_2\text{O}_6$	(D) Temporary hardness
(A)	(i) → (D) ; (ii) → (A) ; (iii) → (B) ; (iv) → (C)	
(B)	(i) → (B) ; (ii) → (C) ; (iii) → (A) ; (iv) → (D)	
(C)	(i) → (C) ; (ii) → (B) ; (iii) → (D) ; (iv) → (A)	
(D)	(i) → (C) ; (ii) → (D) ; (iii) → (B) ; (iv) → (A)	

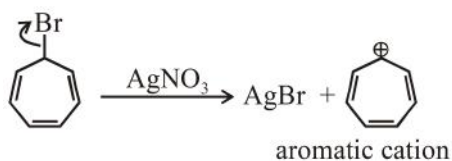
Sol. D

$\text{Na}_2\text{CO}_3 \cdot 10\text{H}_2\text{O} \rightarrow$  Solvay process  
 $\text{Mg}(\text{HCO}_3)_2 \rightarrow$  Temporary hardness  
 NaOH → Castner-kellner cell  
 $\text{Ca}_3\text{Al}_2\text{O}_6 \rightarrow$  Portland cement

12. Which of the following compounds will produce a precipitate with  $\text{AgNO}_3$  ?



Sol. B

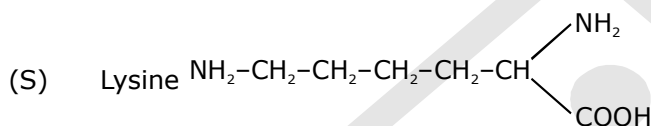
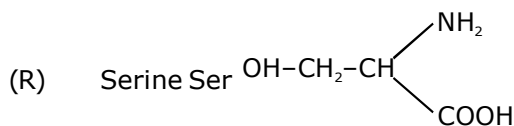
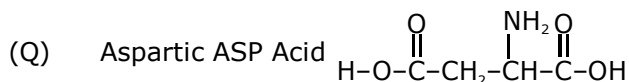
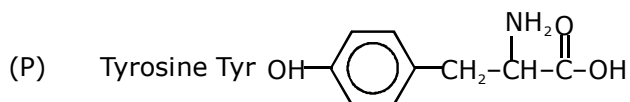


as it can produce aromatic cation so will produce precipitate with  $\text{AgNO}_3$ .

13. The correct match between Item I and Item II is :

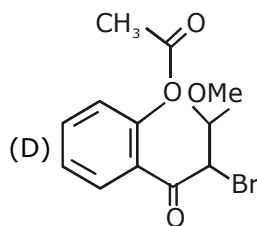
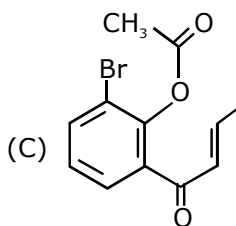
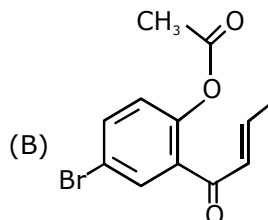
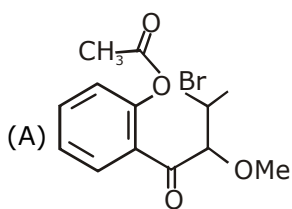
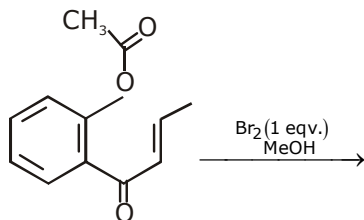
- |     | Item I                            | Item II |
|-----|-----------------------------------|---------|
| (A) | Ester test                        | (P) Tyr |
| (B) | Carbylamine test                  | (Q) Asp |
| (C) | Phthalein dye test                | (R) Ser |
|     |                                   | (S) Lys |
| (A) | (A) → (Q) ; (B) → (S) ; (C) → (R) |         |
| (B) | (A) → (R) ; (B) → (S) ; (C) → (Q) |         |
| (C) | (A) → (R) ; (B) → (Q) ; (C) → (P) |         |
| (D) | (A) → (Q) ; (B) → (S) ; (C) → (P) |         |

Sol. **D**

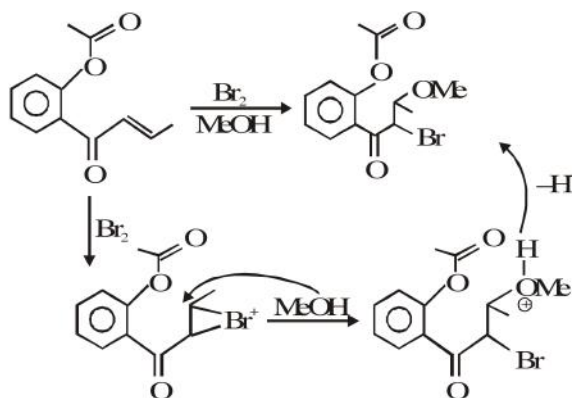


- |     |               |  |
|-----|---------------|--|
| (A) | Ester test    | (Q) Aspartic acid (Acidic amino acid)      |
| (B) | Carbylamine   | (S) Lysine [NH <sub>2</sub> group present] |
| (C) | Phthalein dye | (P) Tyrosine {Phenolic group present}      |

14. the major product obtained in the following conversion is :



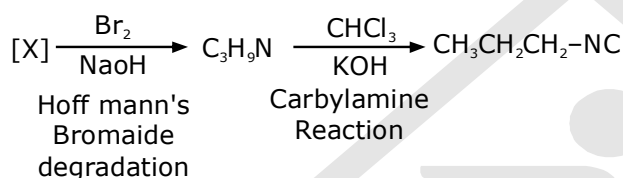
Sol. D



15. A compound 'X' on treatment with  $\text{Br}_2/\text{NaOH}$ , provided  $\text{C}_3\text{H}_9\text{N}$ , which gives positive carbylamine test. Compound 'X' is :

- (A)  $\text{CH}_3\text{CON}(\text{CH}_3)_2$  (B)  $\text{CH}_3\text{CH}_2\text{COCH}_2\text{NH}_2$   
 (C)  $\text{CH}_3\text{CH}_2\text{CH}_2\text{CONH}_2$  (D)  $\text{CH}_3\text{COCH}_2\text{NHCH}_3$

Sol. C



Thus [X] must be amide with one carbon more than is amine  
 Thus [X] is  $\text{CH}_3\text{CH}_2\text{CH}_2\text{CONH}_2$

16. The correct option with respect to the Pauling electronegativity values of the elements is :  
 (A)  $\text{Si} < \text{Al}$  (B)  $\text{Te} > \text{Se}$  (C)  $\text{P} > \text{S}$  (D)  $\text{Ga} < \text{Ge}$

Sol. D

B C  
 Al Si

Ga < Ge

Along the period electronegativity increases

17. 25 ml of the given HCl solution requires 30 mL of 0.1 M sodium carbonate solution. What is the volume of this HCl solution required to titrate 30 mL of 0.2 M aqueous NaOH solution ?  
 (A) 75 mL (B) 50 mL (C) 25 mL (D) 12.5 mL

Sol. C

HCl with  $\text{Na}_2\text{CO}_3$   
 Eq. of HCl = Eq. of  $\text{Na}_2\text{CO}_3$

$$\frac{25}{1000} \times M \times 1 = \frac{30}{1000} \times 0.1 \times 2$$

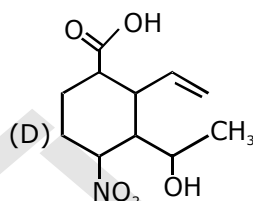
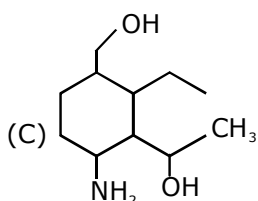
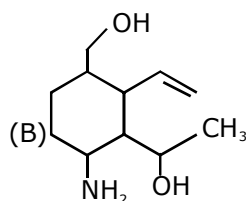
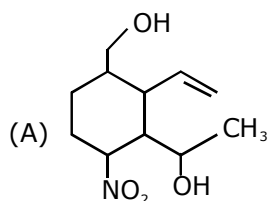
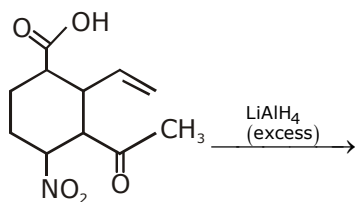
$$M = \frac{6}{25} \text{ M}$$

Eq of HCl = Eq. of NaOH

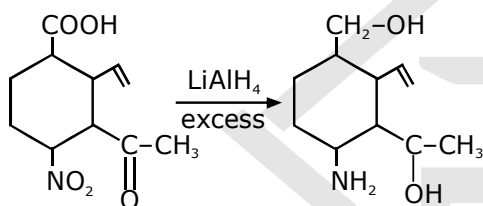
$$\frac{6}{25} \times 1 \times \frac{V}{1000} = \frac{30}{1000} \times 0.2 \times 1$$

$$V = 25 \text{ ml}$$

18. The major product obtained in the following reaction is :



Sol. B



$\text{LiAlH}_4$  will not affect  $\text{C}=\text{C}$  in this compound.

19. The radius of the largest sphere which fits properly at the centre of the edge of a body centred cubic unit cell is : (Edge length is represented by 'a')
- (A)  $0.067 a$       (B)  $0.047 a$       (C)  $0.027 a$       (D)  $0.134 a$

Sol. A

$$a = 2(R + r)$$

$$\frac{a}{2} = (R + r) \dots (1)$$

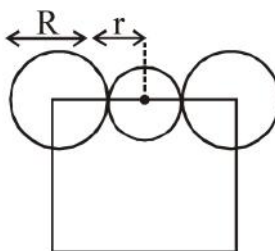
$$a\sqrt{3} = 4R \dots (2)$$

using (1) & (2)

$$\frac{a}{2} = \frac{a\sqrt{3}}{4} = r$$

$$a \left( \frac{2 - \sqrt{3}}{4} \right) = r$$

$$r = 0.067a$$



20. The reaction  $2X \rightarrow B$  is a zeroth order reaction. If the initial concentration of X is 0.2 M, the half-life is 6 h. When the initial concentration of X is 0.5 M, the time required to reach its final concentration of 0.2 M will be :

(A) 12.0 h (B) 9.0 h (C) 7.2 h (D) 18.0 h

Sol. **D**

For zero order

$$[A_0] - [A_t] = kt$$

$$0.2 - 0.1 = k \times 6$$

$$k = \frac{1}{60} \text{ M/hr}$$

$$\text{and } 0.5 - 0.2 = \frac{1}{60} \times t$$

$$t = 18 \text{ hrs.}$$

21. The standard reaction Gibbs energy for a chemical reaction at an absolute temperature T is given by

$$\Delta_r G^\circ = A - BT$$

Where A and B are non-zero constants. Which of the following is **TRUE** about this reaction ?

- (A) Exothermic if  $B < 0$   
 (B) Exothermic if  $A > 0$  and  $B < 0$   
 (C) Endothermic if  $A > 0$   
 (D) Endothermic if  $A < 0$  and  $B > 0$

Sol. **C**

Theory

22.  $K_2HgI_4$  is 40% ionised in aqueous solution. The value of its van't Hoff factor (i) is

(A) 2.0 (B) 1.8 (C) 2.2 (D) 1.6

Sol. **B**

$$\text{For } K_2[HgI_4]$$

$$i = 1 + 0.4(3 - 1)$$

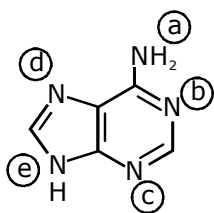
$$= 1.8$$

23. The correct match between item I and item II is :-

Item I		Item II	
(A)	Allosteric effect	(P)	Molecule binding to the active site of enzyme
(B)	Competitive inhibitor	(Q)	Molecule crucial for communication in the body
(C)	Receptor	(R)	Molecule binding to a site other than the active site of enzyme
(D)	Poison	(S)	Molecule binding to the enzyme covalently

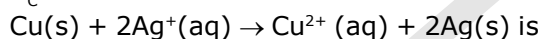
- (A) (A)  $\rightarrow$  (P) ; (B)  $\rightarrow$  (R) ; (C)  $\rightarrow$  (Q) ; (D)  $\rightarrow$  (S)  
 (B) (A)  $\rightarrow$  (P) ; (B)  $\rightarrow$  (R) ; (C)  $\rightarrow$  (S) ; (D)  $\rightarrow$  (Q)  
 (C) (A)  $\rightarrow$  (R) ; (B)  $\rightarrow$  (P) ; (C)  $\rightarrow$  (S) ; (D)  $\rightarrow$  (Q)  
 (D) (A)  $\rightarrow$  (R) ; (B)  $\rightarrow$  (P) ; (C)  $\rightarrow$  (Q) ; (D)  $\rightarrow$  (S)



**Sol. D****24.** In the following compound,

The favourable site/s for protonation is/are :

- (A) a and e                      (B) a  
 (C) b, c and d                (D) a and d

**Sol. C**Localised lone pair e<sup>-</sup>.**25.** Given the equilibrium constant ; $K_c$  of the reaction :is  $10 \times 10^{15}$ , calculate the  $E_{\text{cell}}^0$  of this reaction at 298 K

$$\left[ 2.303 \frac{RT}{F} \text{ at } 298 \text{ K} = 0.059 \text{ V} \right]$$

- (A) 0.04736 V                (B) 0.4736 V  
 (C) 0.4736 mV                (D) 0.04736 mV

**Sol. B**

$$E_{\text{cell}} = E_{\text{cell}}^0 - \frac{0.059}{n} \log Q$$

At equilibrium

$$E_{\text{cell}} = \frac{0.059}{n} \log 10^{16}$$

$$= 0.059 \times 8$$

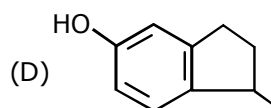
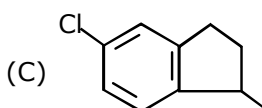
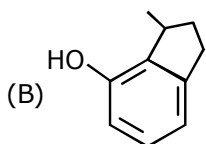
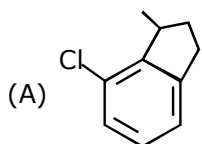
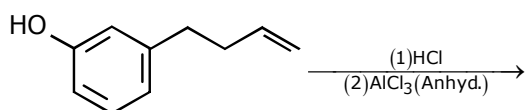
$$= 0.472 \text{ V}$$

**26.** The coordination number of Th in  $\text{K}_4[\text{Th}(\text{C}_2\text{O}_4)_4(\text{OH}_2)_2]$  is : $(\text{C}_2\text{O}_4^{2-} = \text{oxalato})$ 

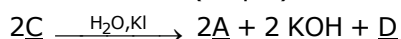
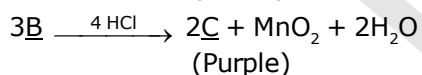
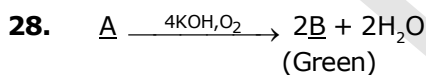
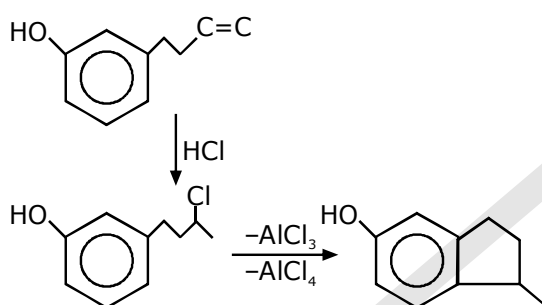
- (A) 10                      (B) 8                      (C) 6                      (D) 14

**Sol. A** $\text{C}_2\text{O}_4^{2-}$  (oxalato) : bidentate $\text{H}_2\text{O}$  (aqua) : Monodentate

27. The major product of the following reaction is :



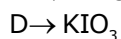
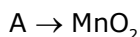
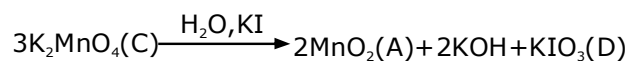
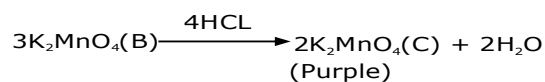
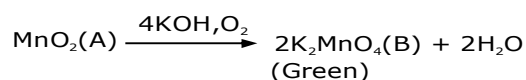
Sol. **D**



In the above sequence of reactions, A and D, respectively, are :

- (A) KI and  $\text{KMnO}_4$       (B)  $\text{MnO}_2$  and  $\text{KIO}_3$   
(C) KI and  $\text{K}_2\text{MnO}_4$     (D)  $\text{KIO}_3$  and  $\text{MnO}_2$

Sol. **B**

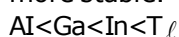


29. The relative stability of +1 oxidation state of group 13 elements follows the order :

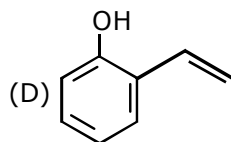
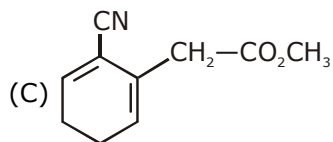
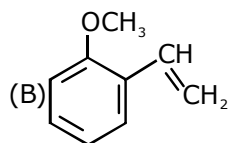
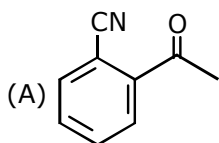
- (A)  $\text{Al} < \text{Ga} < \text{In} < \text{Tl}$                       (B)  $\text{Ga} < \text{Al} < \text{In} < \text{Tl}$   
(C)  $\text{Tl} < \text{In} < \text{Ga} < \text{Al}$                       (D)  $\text{Al} < \text{Ga} < \text{Tl} < \text{In}$

Sol. **A**

Due to inert pair effect as we move down the group in 13th group lower oxidation state becomes more stable.



30. Which of the following compounds reacts with ethylmagnesium bromide and also decolourizes bromine water solution:



Sol. C, D

